

CITY | DRESSING

## SPRING PACKAGES

Valentine's and Easter



# *Contents*

<b>3</b>	Introduction
<b>4</b>	Valentine's
<b>7</b>	Spring Pop-Up Parks
<b>8</b>	Easter Pop-Up Parks
<b>9</b>	Easter Trails
<b>10</b>	Spring Trails
<b>11</b>	Dinosaur Trails
<b>12</b>	Artificial Grass Animal Trails

<b>13</b>	Mindful Monsters Trails
<b>14</b>	Inflatable Flower Trails
<b>15</b>	Easter Maze
<b>16</b>	Quick Block Maze
<b>17</b>	Hedge Maze
<b>18</b>	Easter Selfie Opportunities
<b>19</b>	Information Towers
<b>20</b>	Contact

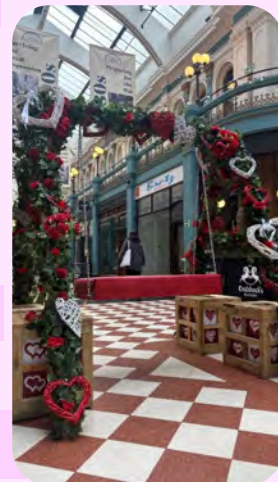
# *Creating experiences, transforming places.*

Welcome to City Dressing's Spring Brochure – a celebration of colour, creativity, and community spirit. This season, we transform streets and spaces with vibrant installations, floral displays, and eye-catching displays. Concentrating on trials and Photo Opportunities. Discover how our designs bring places to life, inspiring joy, connection, and pride wherever people gather.





**Budget: from £1800**

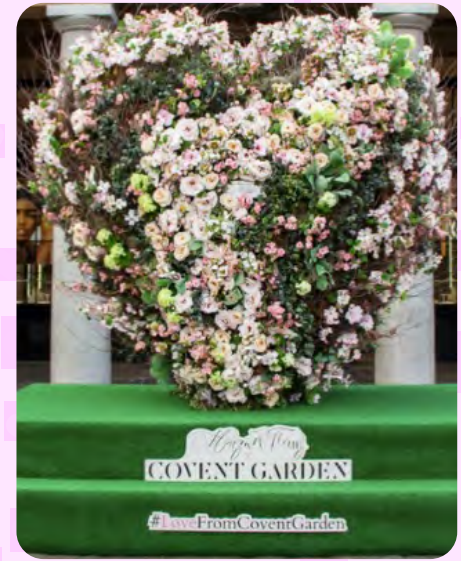


# Valentine's

Valentine Swing Benches and seats. You cannot beat the romance of a picture on a Swing seat or Ski lift.







# *Valentine's*

We have a selection of giant hearts that can be branded with your logo. Each heart is over 5ft so creates quite an impression.

**Budget: from £2000**

# Valentine's

Opt for something more unique with our Love Jeep, telephone box, flower wall or Selfie tube.

**Budget: from £1800**





# Spring Pop Up Parks

Budget: from £2000

Welcome Spring Flowers and Colour with our temporary parks.

Pop up Parks can be made to any size to suit any space and can be designed to a personalised theme:

- Spring Flowers
- Forest Park
- Bug park – a centre piece for our bug trail
- Wellbeing Park
- Games
- Dino Park



Budget: from £1800



# *Easter Pop Up Parks*

The Pop Up Parks are perfect for creating an Easter craft space, start of a trail or space for workshops.







# *Easter Trails*

Range of trails to suit different budgets:

**£3-£5k**

- Vintage Easter Egg Trail
- Bespoke Bunny Dibond trails

**£3k (+ additions)**

- Window trails
- AR Trails

# Spring Trails

Range of trails to suit different budgets:

## £9-£15k

- Dinosaurs
- Artificial grass animals
- Spring Wheelbarrows
- Inflatable flowers

## £6-8k

- Bug Trails
- Bespoke Dibond trails

## £3k (+additions)

- Monster trails





# *Dinosaur Trails*

Discover the ultimate prehistoric adventure as life-size dinosaurs roar back to life in our thrilling dinosaur trail!

All our dinosaurs come with foliage and cages with the option to add sound effects.

Budget: from £6000





Budget: from £6000



# *Artificial Grass Animal Trail*

Our artificial grass animal safaris are a great way to way to encourage footfall and engage with the public.

Mixing nature with adventure and discovery, our much loved safaris are always an eye catching spectacle over the spring holidays.

All our animals are supplied with wooden picket fencing. Each animal can be supplied with a letter that makes a word upon completion of the trail.

# Mindful Monsters Trail

Our Mindful Monster Trail is a great way to engage with children this spring. Hunt around an area to find the 8 monsters hiding in shop windows! After completion of the trail a free copy of the Mindful monsters book and badge can be collected.

Combine with our giant letters or our cut outs for additional fun!





# *Inflatable Flower Trail*

It doesn't get more eye catching than the giant inflatable Flower trail.

Once inflated these stunning sculptures never fail to draw the attention of the public, the perfect Spring trail.

The scale is awe inspiring with the Sun Flowers over 5m high.

Designed to go on any flat surface.



Budget: from £6000





# *Easter Mazes*

Our freestanding mazes provide an exciting centre piece over the spring holidays, designed to fit your space and dressed to suit your specifications our mazes are always crowd pleasers.

Budget: from £6000



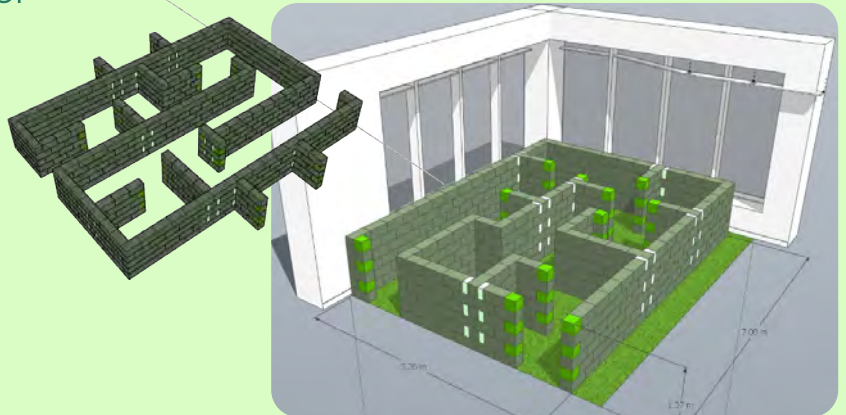
# Quick Block Mazes

Our Quickblock mazes are constructed from modular blocks made from 100% recycled plastic.

Our Quickblock mazes can be built to fit any space and can even be used to create walling for other projects such as an Easter Craft area or queuing system.

Full design drawings can be supplied ahead of installation for the best visualisation

“How can you use our blocks?”



# Hedge Maze

Our artificial hedge mazes are best suited to large indoor areas. They're a great way to add greenery and excitement to your space.

Combining adventure, challenge, and discovery in a way that excites both the mind and body! Mazes add a sense of mystery to all ages.

Budget: from £6000





# *Easter Selfies*

From giant inflatable eggs to our flower benches we can cater for all audiences. The giant inflatable eggs are unique to City Dressing.

**Budget: from £1000**



# Information Towers

Information towers are a highly effective way of promoting upcoming events and generating interest.

Information towers are big enough to be noticed but small enough to be placed almost anywhere!

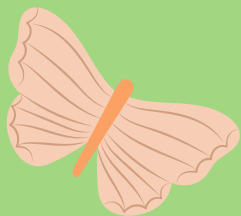
Our towers are either three or four sided and stand 2.5m or 1.8m tall.

No planning is required for short term installations.



Budget: from £1000





# CITY | DRESSING

**Kiersten Ward**

Senior Project Manager

07432 578770

[kiersten@citydressing.co.uk](mailto:kiersten@citydressing.co.uk)

**Jeremy Rucker**

Managing Director

07770 983806

[jeremy@citydressing.co.uk](mailto:jeremy@citydressing.co.uk)

**Lianne Smith**

Sales Manager

07792 388683

[lianne@citydressing.co.uk](mailto:lianne@citydressing.co.uk)

[citydressing.co.uk](http://citydressing.co.uk)